



# INSTRUCTIONS

Ins. No. E-020IMC-4-E

SMART COMMUNICATION UNIT

MODEL : EL2310

## SOFTWARE INSTALLATION PROCEDURE MANUAL

## CONTENTS

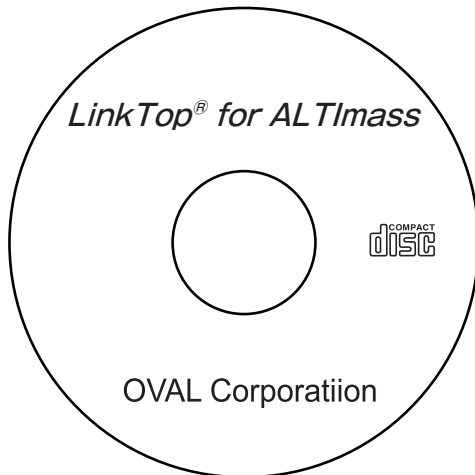
<b>1. PREFACE</b> .....	3
1.1 Preparing the Product .....	3
1.2 CD-ROM Folder Configuration .....	4
<b>2. INSTALLING EL2310 CONTROL PROGRAM “LinkTop”</b> .....	5
<b>3. INSTALLING DRIVER</b> .....	7
3.1 Installation.....	7
3.2 Recognizing Interface Adapter .....	8
3.3 Confirming & Changing COM Port Number.....	8

## 1. PREFACE

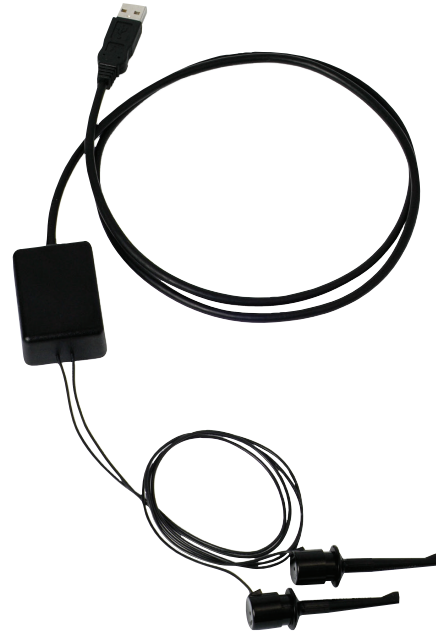
### 1.1 Preparing the Product

Remove the products from the EL2310 carton and make sure you have all the components required.

CD-ROM(one)  
(LinkTop and driver)



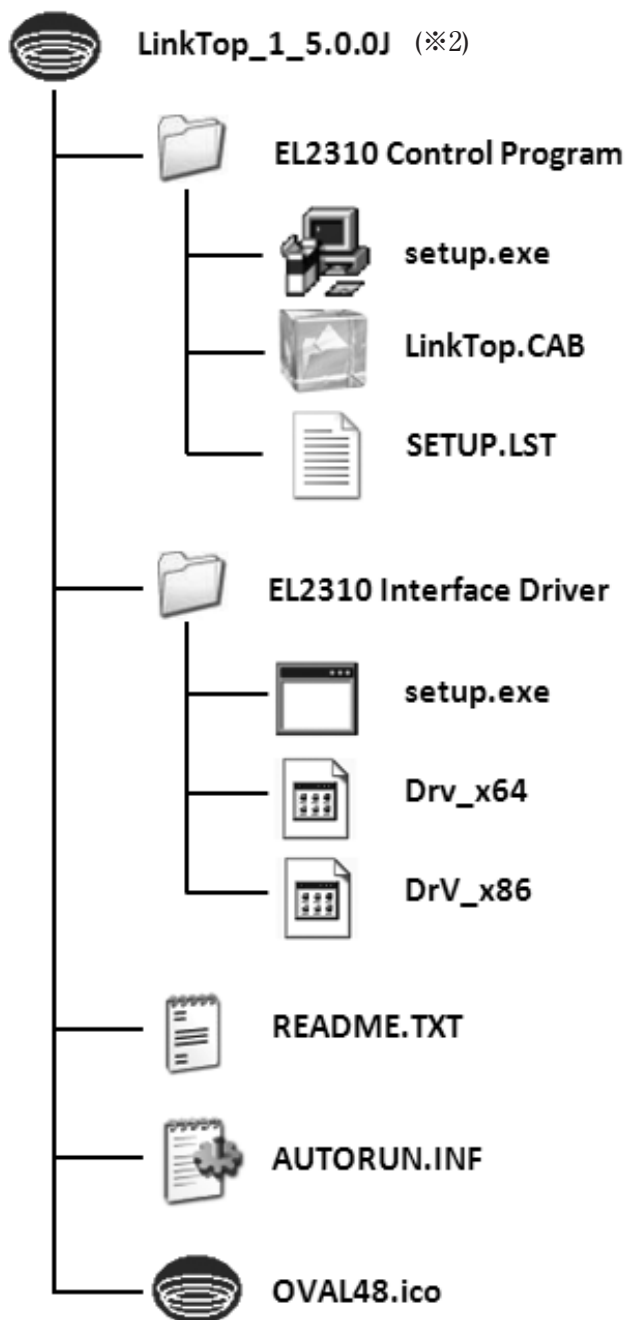
Interface Adapter



※ This CD-ROM title is an example. It differs with the model.

## 1.2 CD-ROM Folder Configuration

The CD-ROM contains “EL2310 Control Program “LinkTop” and “EL2310 Interface Driver” (※1). The folder is configured as shown below.



CD-ROM Folder Configuration

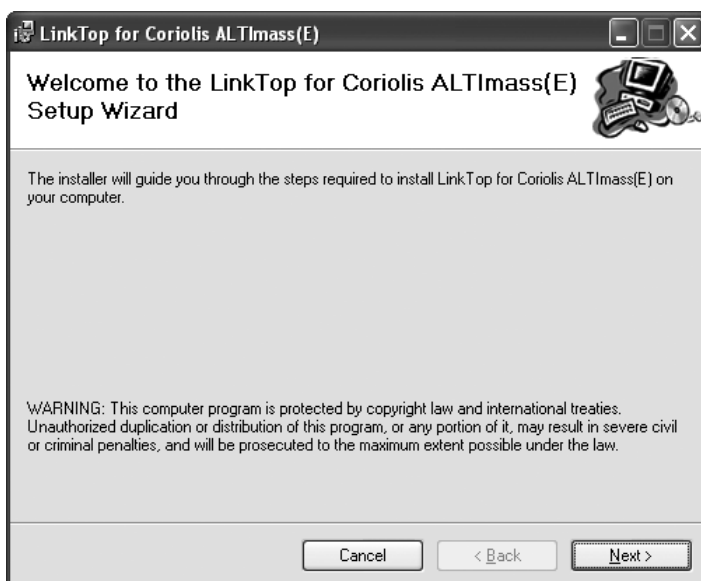
※1 “EL2310 Interface Driver” is supplied by MG Co., Ltd.

※2 This CD-ROM title is an example. It differs with the model.

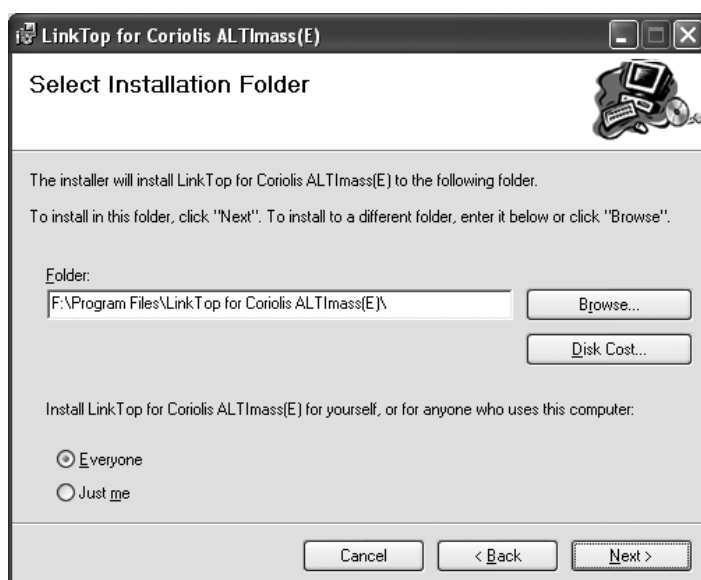
## 2. INSTALLING EL2310 CONTROL PROGRAM “LinkTop”

It is necessary for you to install “LinkTop” in your PC using the following procedure.

- ① Turn on your PC to start Windows.
- ② Set the CD-ROM to your PC.
- ③ Open the EL2310 Control Program folder in the CD-ROM, right-click on setup.exe, and select “Run as administrator” from the menu. The following window appears.



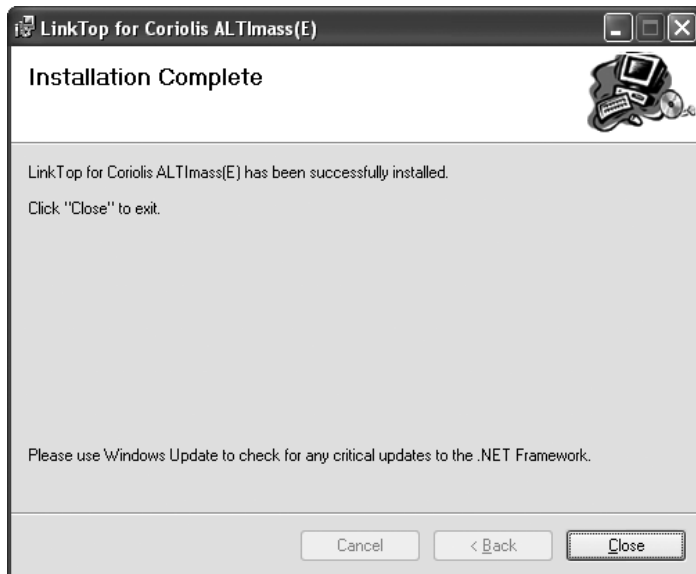
- ④ Click on [Next] .



- ⑤ Click on [Next] .



⑥ Click on [Next] .



⑥ Click on [Close] .

Now, you have completed LinkTop installation.

### 3. INSTALLING DRIVER

#### 3.1 Installation

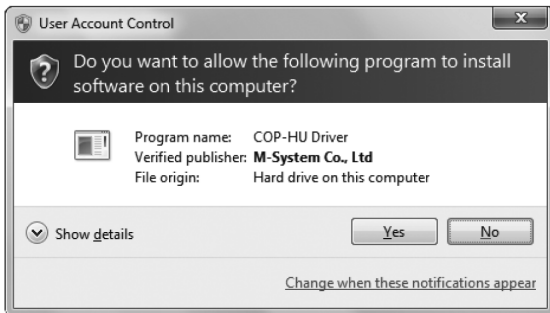
**⚠ CAUTION: Make sure device is not connected to USB port of your PC during the installation.**  
**Be sure to log on to Windows as Computer Administrator.**

For using this device it is necessary to install the driver software in your PC.

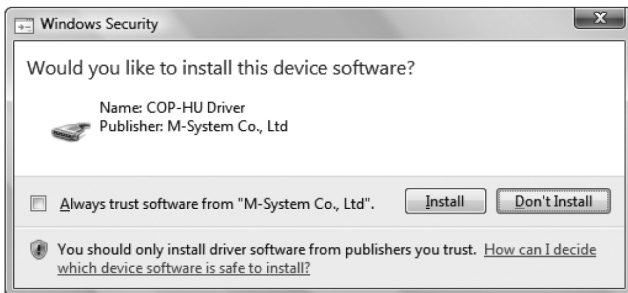
By booting up “EL2310 Interface Driver” ⇒ “setup. exe” in CD-ROM, installation starts.

Note: When the following dialog appears, click on [Allow] to continue with the installation.

#### ■ For Windows 10 to 11



Click on [Yes].



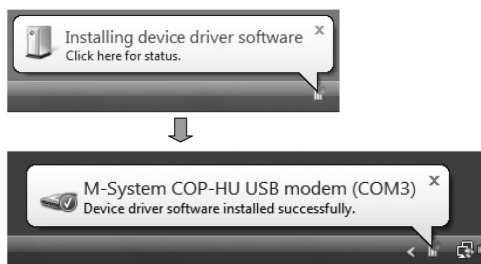
Click on [Install].

### 3.2 Recognizing Interface Adapter

Windows recognizes the device connecting it to the USB port of your computer after installing the driver software and installs it automatically.

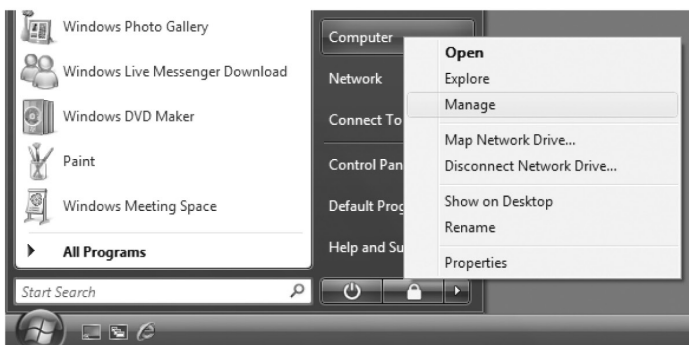
Note: We recommend connecting always the device in the same USB port. Once the PC has recognized the device allocation on a selected port, an error might occur if it is connected to a different USB port.

For Windows 7 to 11 or Windows Vista, connecting the device to the USB port, a balloon tip as follows is displayed in the bottom right of the screen, then it becomes able to be used automatically.

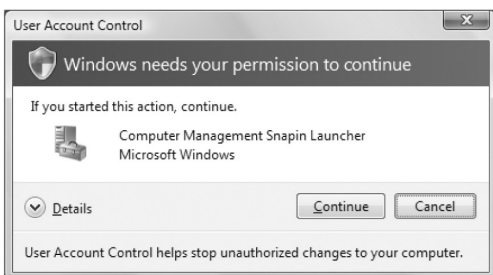


### 3.3 Confirming & Changing COM Port Number

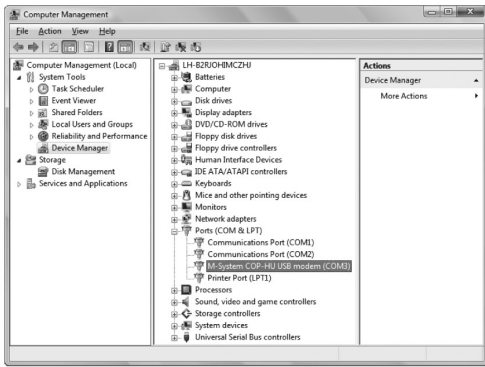
The device is allocated automatically in the COM port that is available. Referring to this, configuration is changeable.



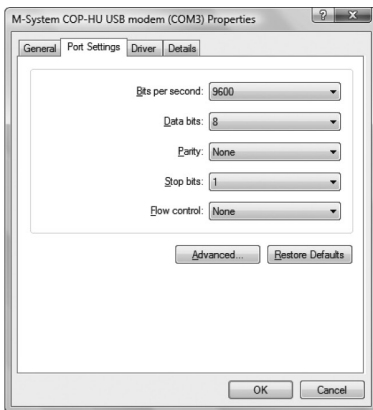
- ① Click on [Start].
- ② Click on [Computer].
- ③ Click on [Manage].



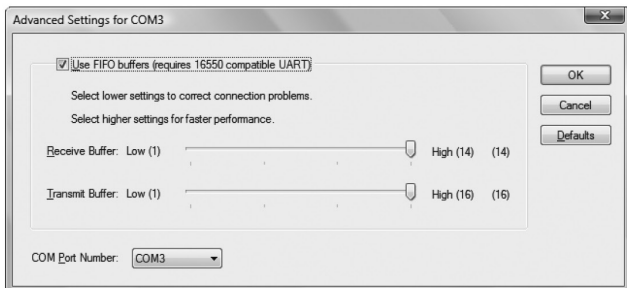
- ④ Click on [Continue].  
This screen is not displayed depending on the OS setting. In that case, skip this step.



- ⑤ Click on [Device Manager].
- ⑥ Click on [Ports (COM & LPT)].
- ⑦ Double click on [M-System COP-HU USB modem]



- ⑧ Click on [Port Settings].
- ⑨ Click on [Advanced].



- ⑩ In [COM Port number] you can change the COM port allocation number.
- ⑪ Clicking on [OK] the changes will be operative.

All specifications are subject to change without notice for improvement.

2025.10 Revised△  
2011.12 Released  
E-020IMC-4-E(1)



**OVAL Corporation**

Head Office: 10-8, Kamiochiai 3-chome, Shinjuku-ku, Tokyo, Japan  
Phone: 81-3-3360-5121 Fax: 81-3-3365-8605