



INSTRUCTIONS

Ins. No. E-020IMC-3-E

SMART COMMUNICATION UNIT

MODEL : EL2310

SOFTWARE INSTALLATION PROCEDURE MANUAL

CONTENTS

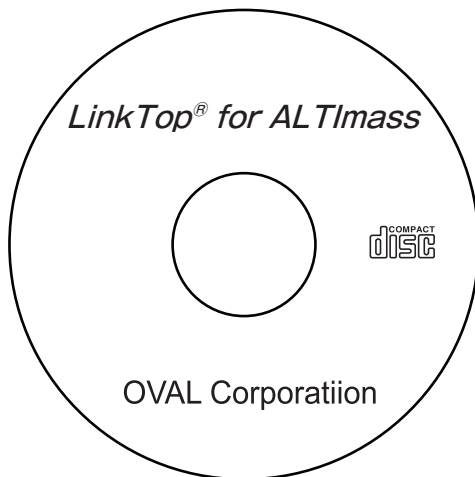
1. PREFACE	3
1.1 Preparing the Product	3
1.2 CD-ROM Folder Configuration	4
2. INSTALLING EL2310 CONTROL PROGRAM “LinkTop”	5
3. INSTALLING DRIVER	7
3.1 Windows XP	7
3.1.1 Installation	7
3.1.2 Confirming & Changing COM Port Number	9
3.2 Windows 2000	11
3.2.1 Installation	11
3.2.2 Confirming & Changing COM Port Number	13
3.3 Windows Vista, Windows 7 to 11	14
3.3.1 Installation	14
3.3.2 Recognizing Interface Adapter	15
3.3.3 Confirming & Changing COM Port Number	15

1. PREFACE

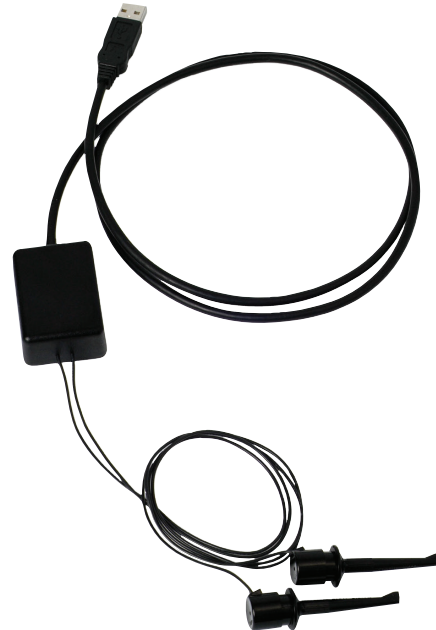
1.1 Preparing the Product

Remove the products from the EL2310 carton and make sure you have all the components required.

CD-ROM(one)
(LinkTop and driver)



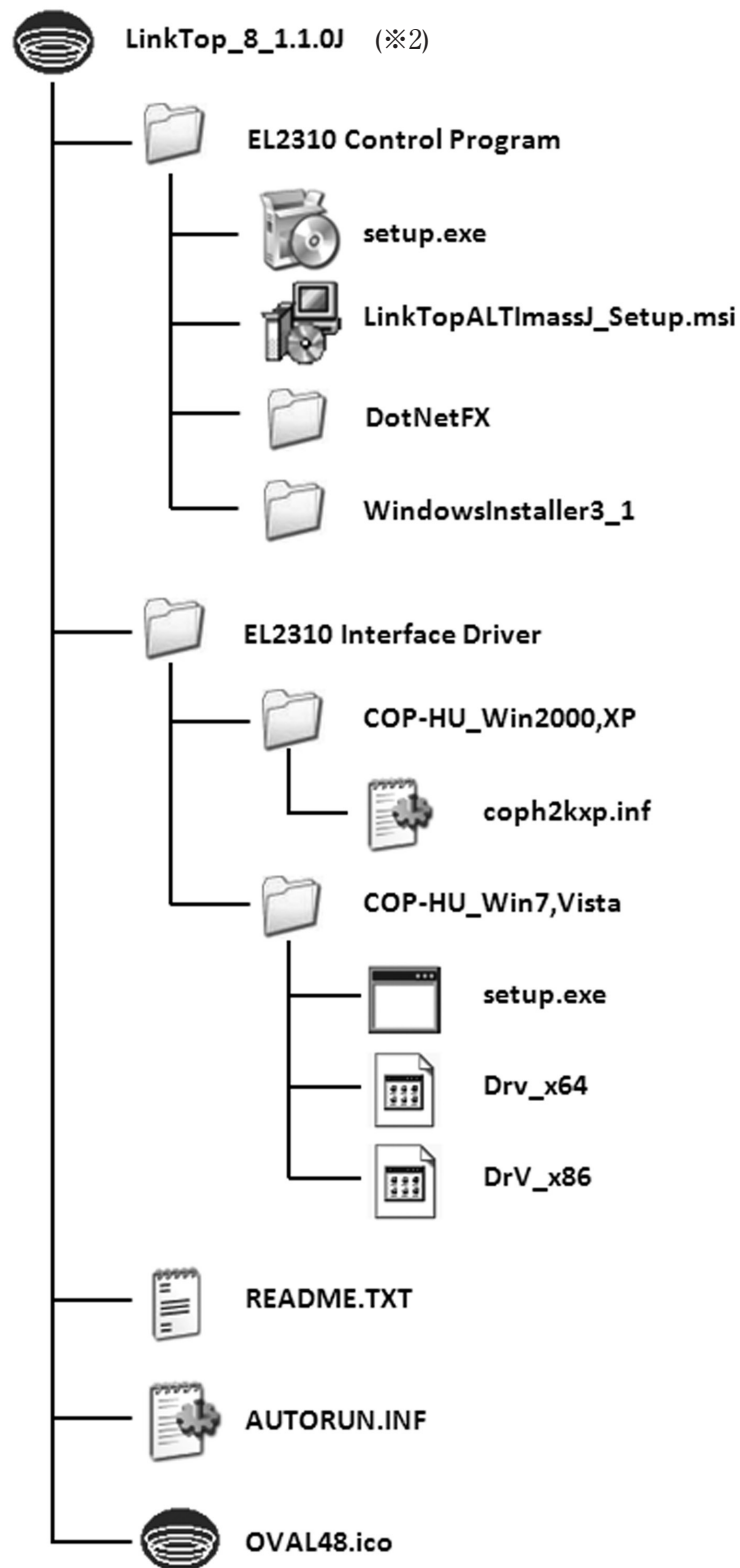
Interface Adapter



※ This CD-ROM title is an example. It differs with the model.

1.2 CD-ROM Folder Configuration

The CD-ROM contains “EL2310 Control Program “LinkTop” and “EL2310 Interface Driver” (※1). The folder is configured as shown below.



CD-ROM Folder Configuration

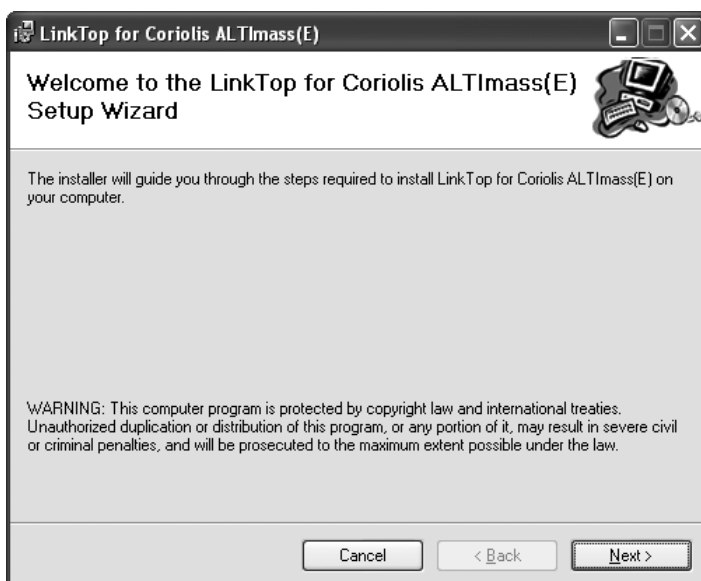
※1 “EL2310 Interface Driver” is supplied by M-System Co., Ltd.

※2 This CD-ROM title is an example. It differs with the model.

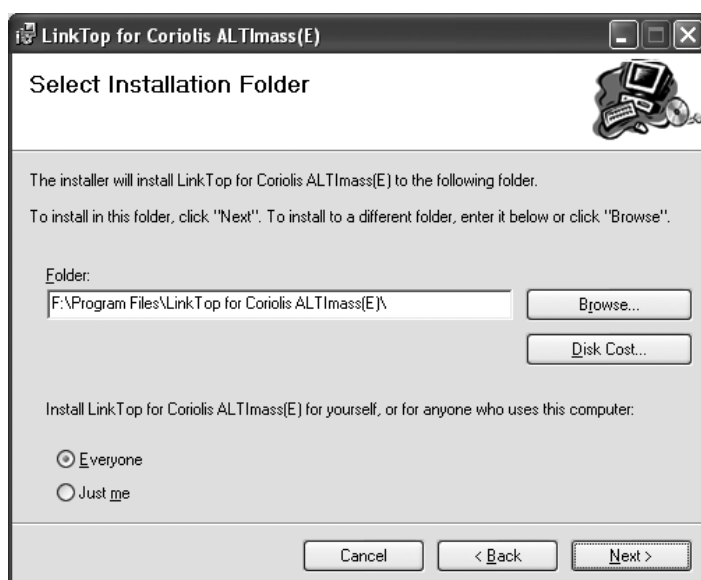
2. INSTALLING EL2310 CONTROL PROGRAM “LinkTop”

It is necessary for you to install “LinkTop” in your PC using the following procedure.

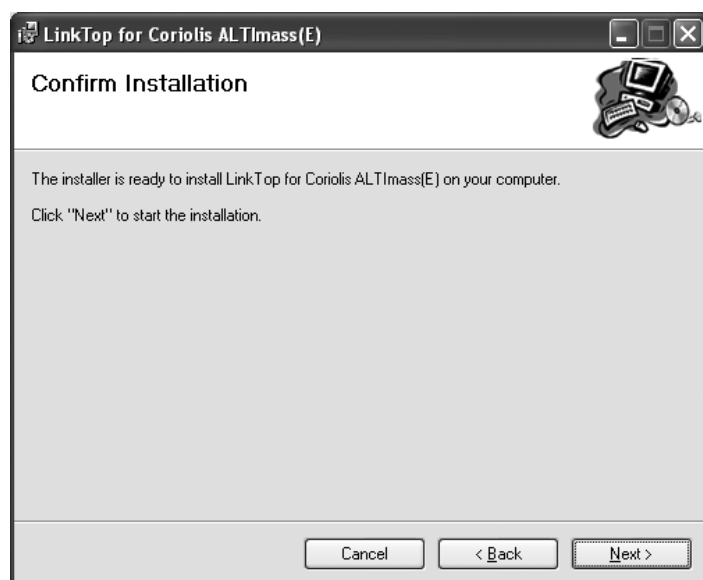
- ① Turn on your PC to start Windows.
- ② Set the CD-ROM to your PC.
- ③ Open the EL2310 Control Program folder in the CD-ROM, right-click on setup.exe, and select “Run as administrator” from the menu. The following window appears.



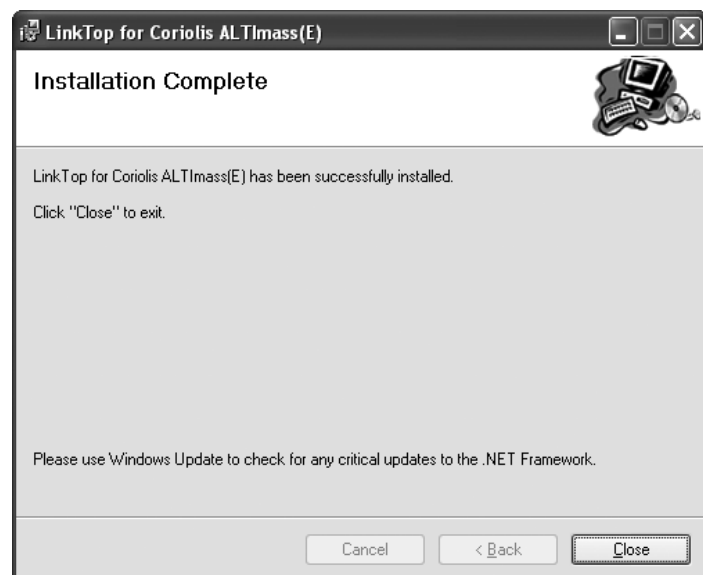
- ④ Click on [Next] .



- ⑤ Click on [Next] .



⑥ Click on [Next] .



⑥ Click on [Close] .

Now, you have completed LinkTop installation.

3. INSTALLING DRIVER

3.1 Windows XP

 **CAUTION:** Be sure to log on to Windows as Computer Administrator.

3.1.1 Installation



- ① Insert the CD-ROM to the PC's CD drive and connect the COP-HU to the PC's USB port.

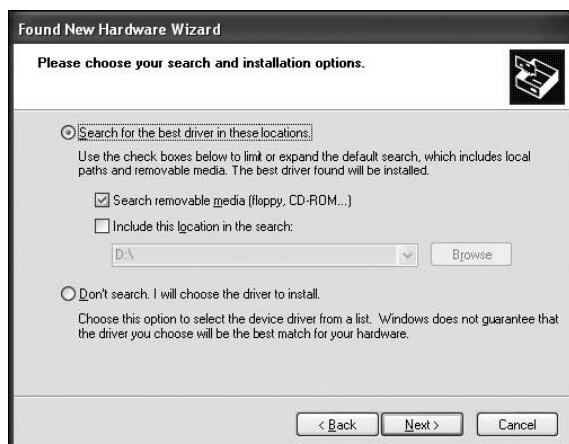
Once the PC detects the new device, a message appears at the right-bottom of the screen.



- ② Wait until Found New Hardware Wizard appears on the screen to choose 'No, not this time' and click [Next].



- ③ Install Hardware Drivers:
Choose 'Install from a list or specific location (Advanced)' and click [Next].



- ④ Driver Files Search and Installation Options:
Choose 'Search removable media (floppy, CD-ROM...)' and click [Next].



- ⑤ Wait while the wizard installs the software.



- ⑥ If Windows shows a warning message as shown to the left, click [Continue Anyway].
The COP-HU compatibility with Windows has been verified even though the COP-HU driver software has not passed Windows Logo testing.



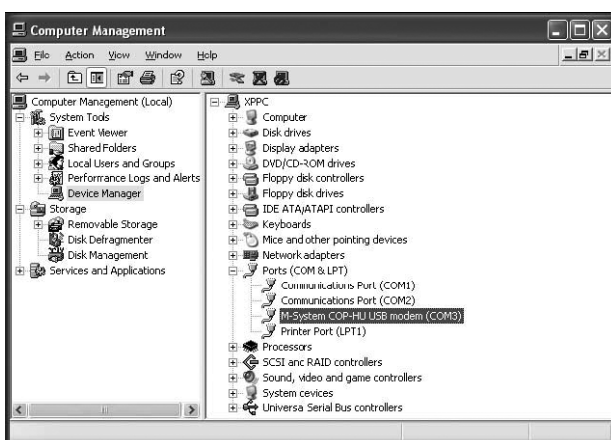
- ⑦ When it is complete, press [Finish] to close the window.

3.1.2 Confirming & Changing COM Port Number

The COP-HU driver is automatically assigned to a vacant COM port. In order to confirm and/or change assigned COM port number, proceed as explained in the following.



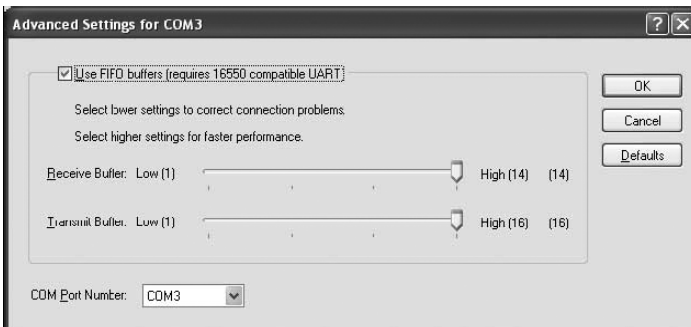
- ① Click the right mouse button on [My Computer] to call up the submenu and choose [Manage].



- ② Click [Device Manager] on the left menu tree and then choose [Ports (COM & LPT)] on the right tree to show assigned ports.
COM port number is indicated after 'M-System COP-HU USB modem.'
In order to change the number, double-click the port name and call up [Property].



- ③ Choose [Port Settings] tab and click [Advanced...] button.



- ④ Click the arrow at the right of 'COM Port Number' and select a desired port number. Click [OK] to apply the change.

3.2 Windows 2000

 **CAUTION:** Be sure to log on to Windows as Computer Administrator.

3.2.1 Installation



- ① Insert the CD-ROM to the PC's CD drive and connect the COP-HU to the PC's USB port.

Once the PC detects the new device, a message appears at the center of the screen.



- ② Wait until Found New Hardware Wizard appears on the screen. Click [Next].

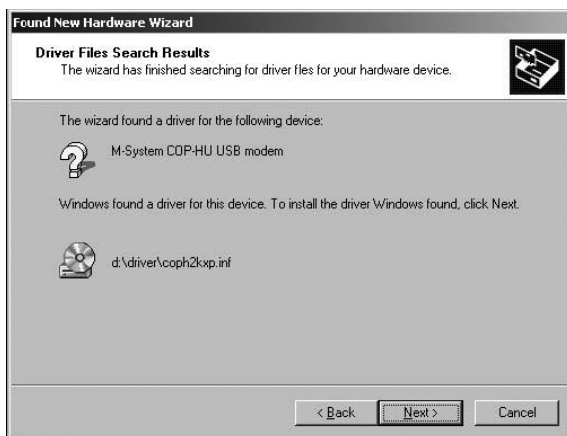


- ③ Install Hardware Device Drivers:
Choose 'Search for a suitable driver for my device (recommended)' and click [Next].



④ Locate Driver Files:

Choose 'CD-ROM drives' and click [Next].



⑤ Driver Files Search Results:

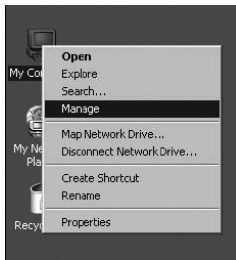
Wait while the wizard finds the COP-HU driver file and click [Next] to start installing.



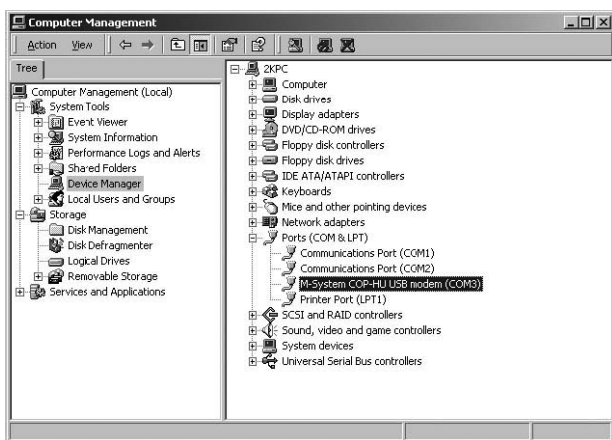
⑥ When it is complete, press [Finish] to close the window.

3.2.2 Confirming & Changing COM Port Number

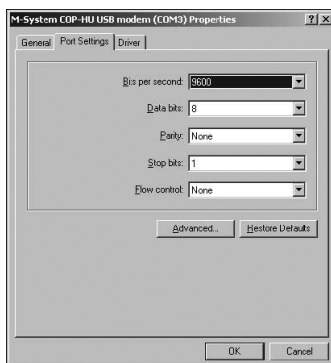
The COP-HU driver is automatically assigned to a vacant COM port. In order to confirm and/or change assigned COM port number, proceed as explained in the following.



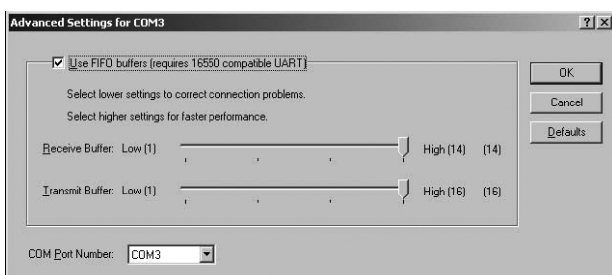
- ① Click the right mouse button on [My Computer] to call up the submenu and choose [Manage].



- ② Click [Device Manager] on the left menu tree and then choose [Ports (COM & LPT)] on the right tree to show assigned ports. COM port number is indicated after 'M-System COP-HU USB modem.' In order to change the number, double-click the port name and call up [Property].



- ③ Choose [Port Settings] tab and click [Advanced...] button.



- ④ Click the arrow at the right of 'COM Port Number' and select a desired port number. Click [OK] to apply the change.

3.3 Windows Vista, Windows 7 to 11

3.3.1 Installation

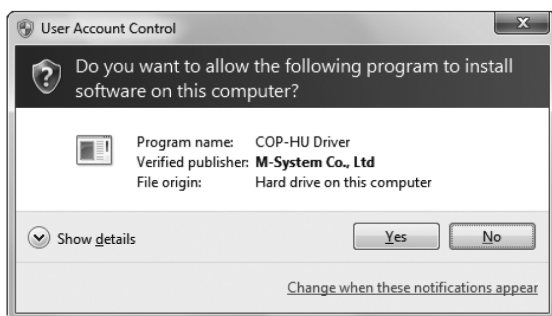
⚠ CAUTION: Make sure device is not connected to USB port of your PC during the installation.
Be sure to log on to Windows as Computer Administrator.

For using this device it is necessary to install the driver software in your PC.

By booting up “EL2310 Interface Driver” ⇒ “COP-HUWin7, Vista” ⇒ “setup. exe” in CD-ROM, installation starts.

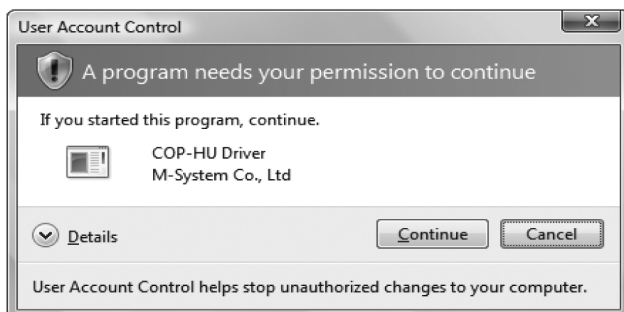
Note: When the following dialog appears, click on [Allow] to continue with the installation.

■ For Windows 7 to 11



Click on [Yes].

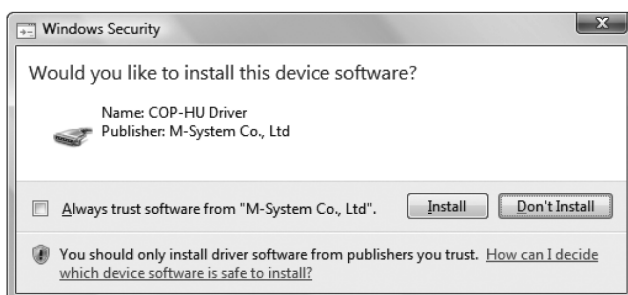
■ For Windows Vista



Click on [Continue].

During the installation, dialogs as the following will be displayed. This is the Microsoft software verification dialog.

■ For Windows 7 to 11 / Windows Vista



Click on [Install].

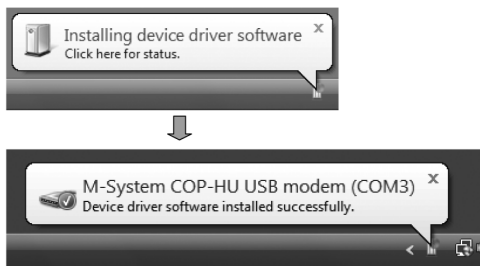
3.3.2 Recognizing Interface Adapter

Windows recognizes the device connecting it to the USB port of your computer after installing the driver software and installs it automatically.

Note: We recommend connecting always the device in the same USB port. Once the PC has recognized the device allocation on a selected port, an error might occur if it is connected it to a different USB port.

■ FOR Windows 7 to 11 / Windows Vista

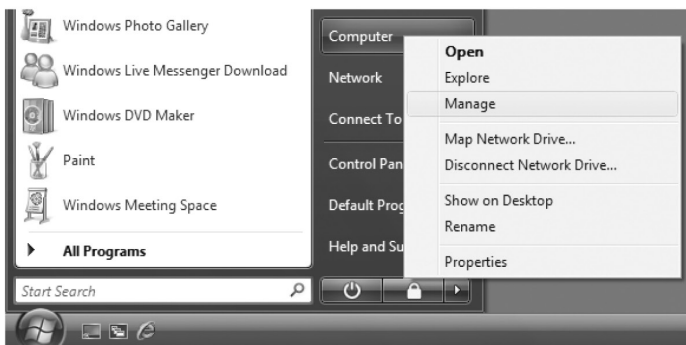
For Windows 7 to 11 or Windows Vista, connecting the device to the USB port, a balloon tip as follows is displayed in the bottom right of the screen, then it becomes able to be used automatically.



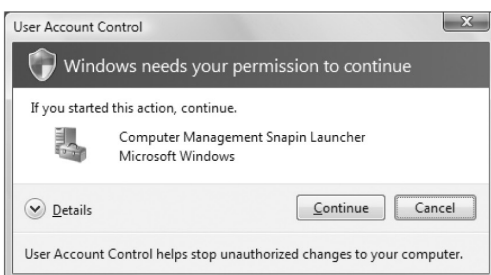
3.3.3 Confirming & Changing COM Port Number

The device is allocated automatically in the COM port that is available. Referring to this, configuration is changeable.

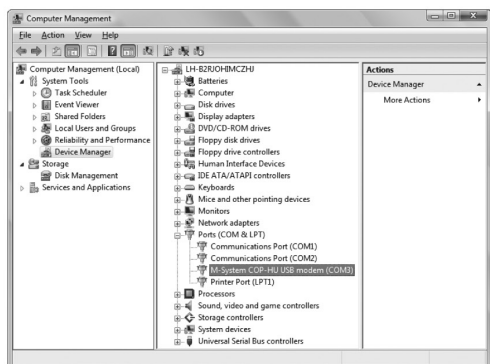
■ FOR Windows 7 to 11 / Windows Vista



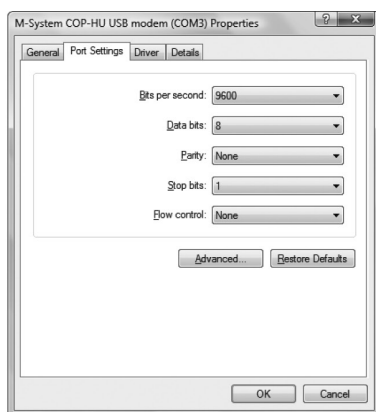
- ① Click on [Start].
- ② Click on [Computer].
- ③ Click on [Manage].



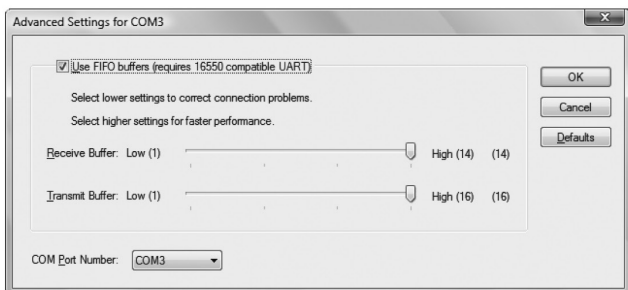
- ④ Click on [Continue].
- This screen is not displayed depending on the OS setting. In that case, skip this step.



- ⑤ Click on [Device Manager].
- ⑥ Click on [Ports (COM & LPT)].
- ⑦ Double click on [M-System COP-HU USB modem]



- ⑧ Click on [Port Settings].
- ⑨ Click on [Advanced].



- ⑩ In [COM Port number] you can change the COM port allocation number.
- ⑪ Clicking on [OK] the changes will be operative.

All specifications are subject to change without notice for improvement.

2024.09 Revised△
2011.12 Released
E-020IMC-3-E(1)



OVAL Corporation

Head Office: 10-8, Kamiochiai 3-chome, Shinjuku-ku, Tokyo, Japan
Phone: 81-3-3360-5121 Fax: 81-3-3365-8605