



INSTRUCTIONS

Ins. No. E-020IMB-4-E

SMART COMMUNICATION UNIT

MODEL : EL2310

SOFTWARE INSTALLATION
PROCEDURE MANUAL

CONTENTS

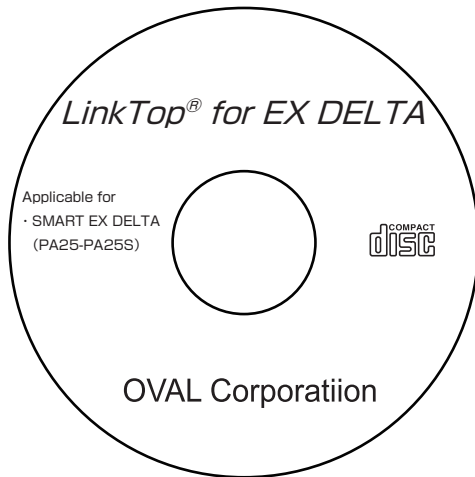
1. PREFACE	3
1.1 Preparing the Product	3
1.2 CD-ROM Folder Configuration	4
2. INSTALLING EL2310 CONTROL PROGRAM “LinkTop”	5
3. INSTALLING DRIVER	6
3.1 Installation.....	6
3.2 Recognizing Interface Adapter	7
3.3 Confirming & Changing COM Port Number.....	7

1. PREFACE

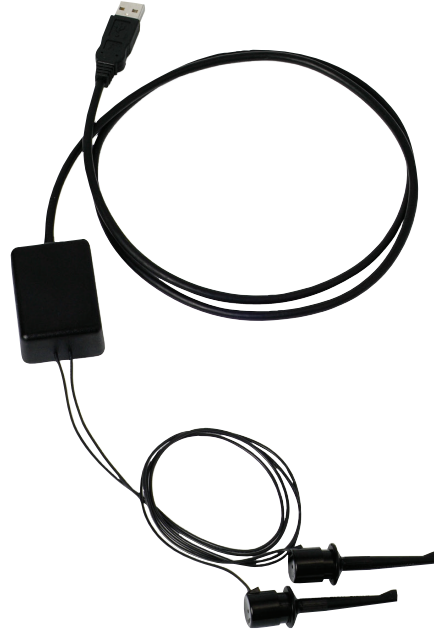
1.1 Preparing the Product

Remove the products from the EL2310 carton and make sure you have all the components required.

CD-ROM(one)
(LinkTop and driver)



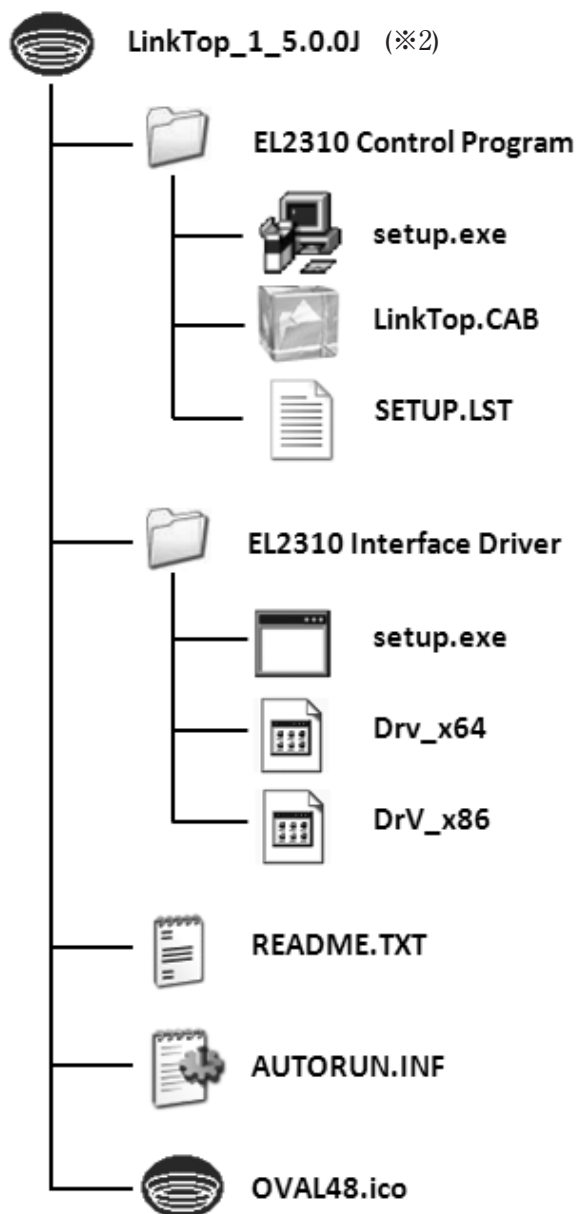
Interface Adapter



※ This CD-ROM title is an example. It differs with the model.

1.2 CD-ROM Folder Configuration

The CD-ROM contains “EL2310 Control Program “LinkTop” and “EL2310 Interface Driver” (※1). The folder is configured as shown below.



CD-ROM Folder Configuration

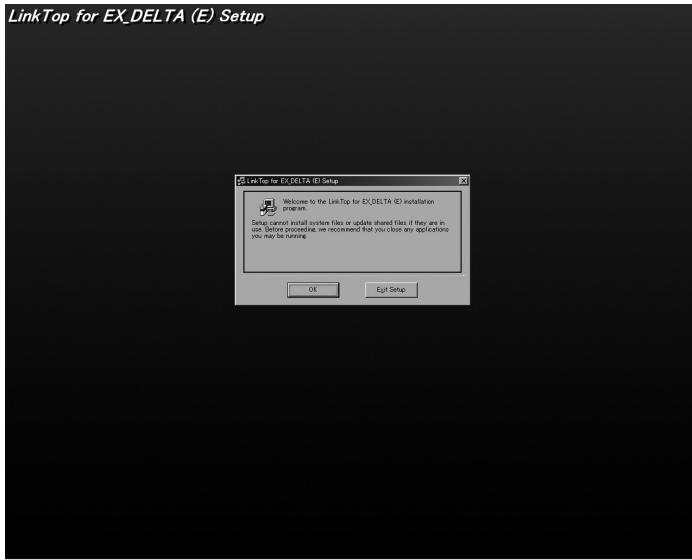
※1 “EL2310 Interface Driver” is supplied by MG Co., Ltd.

※2 This CD-ROM title is an example. It differs with the model.

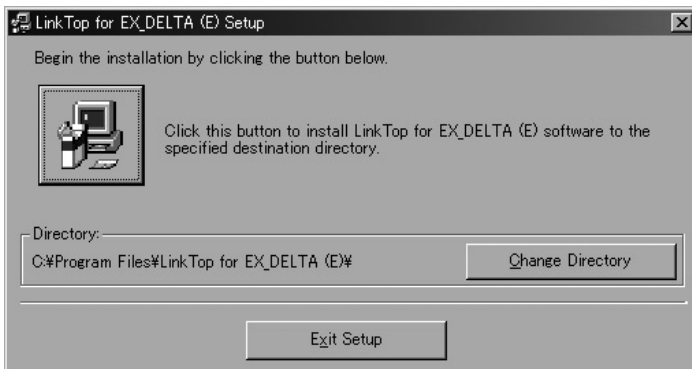
2. INSTALLING EL2310 CONTROL PROGRAM “LinkTop”

It is necessary for you to install “LinkTop” in your PC using the following procedure.

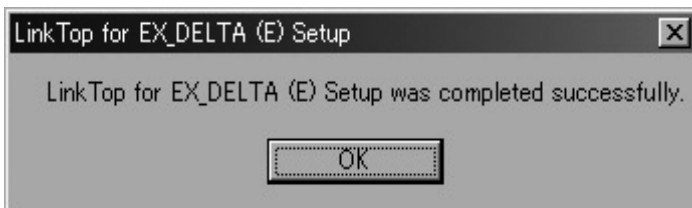
- ① Turn on your PC to start Windows.
- ② Set the CD-ROM to your PC.
- ③ Open the EL2310 Control Program folder in the CD-ROM, right-click on setup.exe, and select “Run as administrator” from the menu. The following window appears.



- ④ Click [OK] and proceed to the following step.



- ⑤ If you want to change the directory, click [Change Directory (C)] and select the desired directory.
- ⑥ Click the button to start the setup.



- ⑦ Click [OK] to complete the setup.

Now, you have completed LinkTop installation.

3. INSTALLING DRIVER

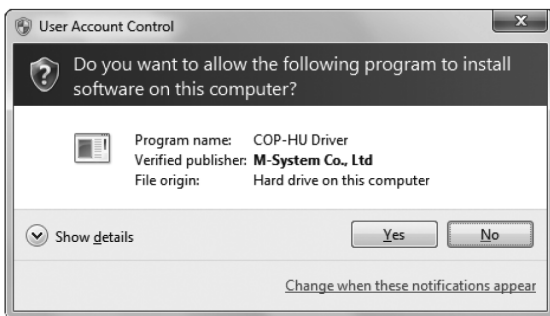
3.1 Installation

⚠ CAUTION: Make sure device is not connected to USB port of your PC during the installation.
Be sure to log on to Windows as Computer Administrator.

For using this device it is necessary to install the driver software in your PC.
By booting up “EL2310 Interface Driver” ⇒ “setup. exe” in CD-ROM, installation starts.

Note: When the following dialog appears, click on [Allow] to continue with the installation.

■ For Windows 10 to 11



Click on [Yes].



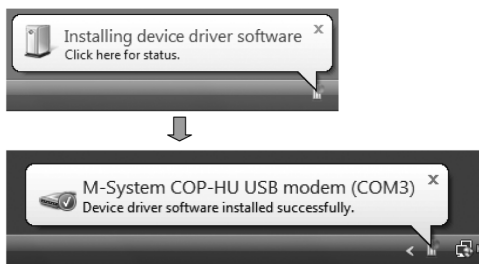
Click on [Install].

3.2 Recognizing Interface Adapter

Windows recognizes the device connecting it to the USB port of your computer after installing the driver software and installs it automatically.

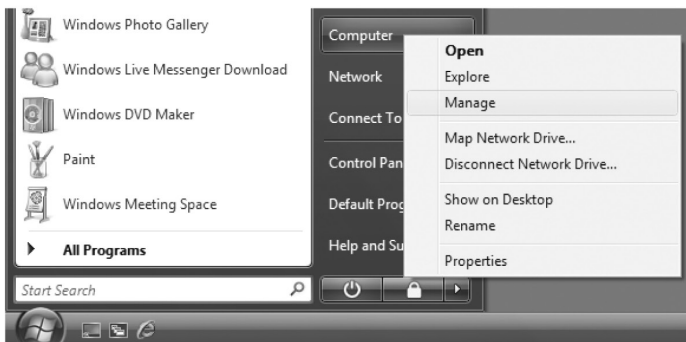
Note: We recommend connecting always the device in the same USB port. Once the PC has recognized the device allocation on a selected port, an error might occur if it is connected it to a different USB port.

Connecting the device to the USB port, a balloon tip as follows is displayed in the bottom right of the screen, then it becomes able to be used automatically.

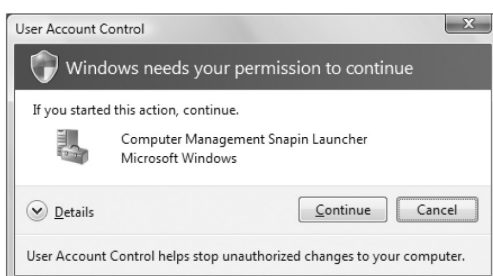


3.3 Confirming & Changing COM Port Number

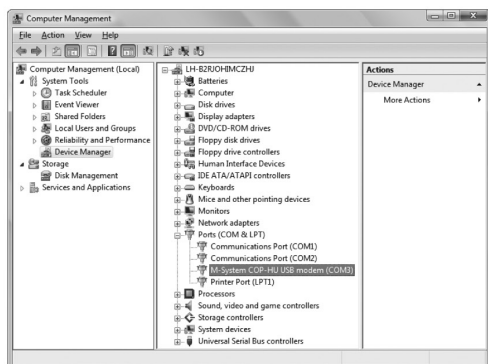
The device is allocated automatically in the COM port that is available. Referring to this, configuration is changeable.



- ① Click on [Start].
- ② Click on [Computer].
- ③ Click on [Manage].



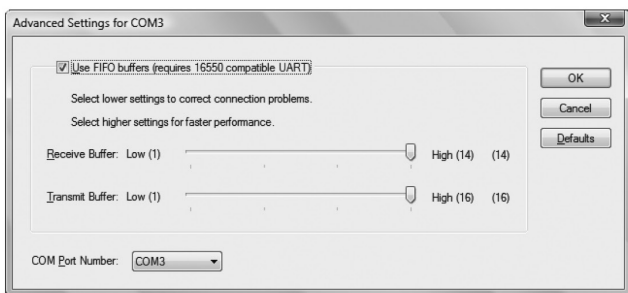
- ④ Click on [Continue].
This screen is not displayed depending on the OS setting. In that case, skip this step.



- ⑤ Click on [Device Manager].
- ⑥ Click on [Ports (COM & LPT)].
- ⑦ Double click on [M-System COP-HU USB modem]



- ⑧ Click on [Port Settings].
- ⑨ Click on [Advanced].



- ⑩ In [COM Port number] you can change the COM port allocation number.
- ⑪ Clicking on [OK] the changes will be operative.

All specifications are subject to change without notice for improvement.

2025.10 Revised △
2011.12 Released
E-020IMB-4-E(1)



OVAL Corporation

Head Office: 10-8, Kamiochiai 3-chome, Shinjuku-ku, Tokyo, Japan
Phone: 81-3-3360-5121 Fax: 81-3-3365-8605