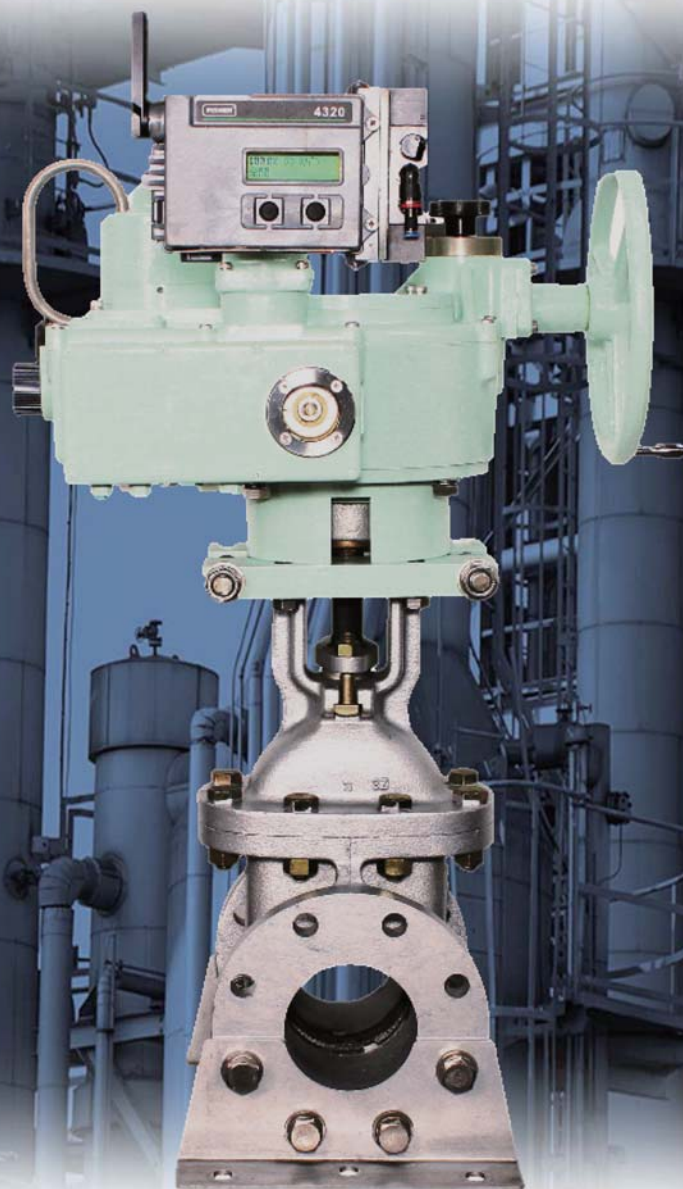




PNEUMATIC VALVE ACTUATOR

# V-Torq II

in combination with the wireless controller system



## Two unique features of the V-Torq II

- ① **Directly mountable** wireless controller!
- ② **Valve position signals** directly obtainable as well as open/close operation signals!

## Advantages of wireless control

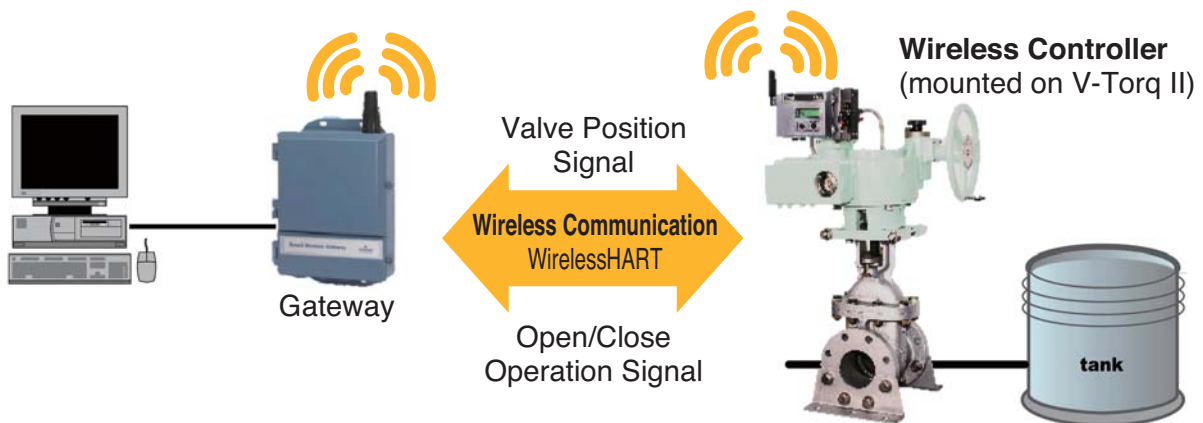
### Reduced cabling work and cost

Since there is no signal cable installation required, remote valve control becomes feasible without costing too much.

### Enhanced business continuity

It eliminates the risk of signal cable disconnection associated with the wired system, even in cases of natural disasters such as earthquakes.

### Installation Example



### Required instruments

- **Gateway**  
Smart Wireless Gateway (Model 1420)
- **Wireless Controller**  
Fisher®4320 Wireless Position Monitor with On/Off Control

### Specification (Wireless Controller)

Communication Protocol	HART7 and IEC62591 (WirelessHART)	Propagation Distance	Controller alone (unobstructed): Approx. 200 m max. Long-distance instrument (unobstructed): Approx. 800 m max. Relayed (2 points): 1 to 2 km
Manufacturer	Emerson Automation Solutions (Nippon Fisher Co., Ltd.)	Battery	Battery: Lithium (non-rechargeable) Life: Approx. 10 years (depends on update rate) *External power optional (12-28VDC, non-explosionproof)
Reference Accuracy	1% of span (Optional) 0.4% of span	* The wireless controller can be mounted on the existing V-Torq II. * For details of the wireless controller, please contact the manufacturer. * The wireless controller is compatible with the manufacturer's wireless platform. * Air for valve driving must be supplied by the customer.	
Standards	ATEX Directive (94/9/EC) Electro Magnetic Compatibility (EMC) (2004/108/EC) Radio and Telecommunications Terminal Equipment Directive (R&TTE) (1999/5/EC)		
Electrical Classification	TIIS, ATEX, IECEx, CSA, NEPSI		
Weight	Monitor: 0.57kg On/Off Control: 1.6kg		

The specification as of July, 2018 is stated in this catalog. Specifications and design are subject to change without notice.



**OVAL Corporation**

3-10-8 Kamiuchiai, Shinjuku-ku, Tokyo 161-8508  
Phone: +81 3-3360-5121 FAX: +81 3-3365-8605

<http://www.oval.co.jp/english>

